

PROTECTED



# Policy: Third Party Attachments to Horizon Power Assets

Standard Number: HPC-11NH-18-0001-2011

Issue Date: 16<sup>th</sup> February 2023

Document Number: 975019

Print Date: 16/02/2023

Uncontrolled document when downloaded. Refer to Horizon Power's website for most current version.

© Horizon Power Corporation 2016

Document Control		
<b>Author</b>	<b>Name:</b> Andrew Nguyen	
	<b>Position:</b> Standards and Plant Engineer	
<b>Reviewed By</b>	<b>Name:</b> Paul Savig	
	<b>Position:</b> Senior Standards Engineer	
<b>Endorsed By</b>	<b>Name:</b> Johnathan Choi	
	<b>Position:</b> Standards and Plant Manager	
<b>Approved By *</b>	<b>Name:</b> Victor Cheng	
	<b>Position:</b> Senior Manager Engineering and Project Services	
<b>Date Created/Last Updated</b>	16 February 2023	
<b>Review Frequency *</b>	5 years	
<b>Next Review Date</b>	16 February 2028	

\* Frequency period is dependent upon circumstances– maximum is 5 years from last issue, review, or revision whichever is the latest. If left blank, the default must be 1 year unless otherwise specified.

Revision Control		
Revision	Date	Description
4	16/02/2023	Update format, references and the Application form in Appendix C
3	30/03/2017	Amended to allow Electrical Attachments

<b>STAKEHOLDERS</b>	
<i>The following positions must be consulted if an update or review is required:</i>	
Asset Managers	System Performance Manager
Safety and Health and Wellbeing	

**TABLE OF CONTENTS**

<b>1</b>	<b>Purpose .....</b>	<b>5</b>
<b>2</b>	<b>Application .....</b>	<b>5</b>
<b>3</b>	<b>Normative References .....</b>	<b>5</b>
3.1	Standards .....	5
3.1.1	Horizon Power Standards .....	5
3.1.2	Other References .....	6
3.2	Definitions and Abbreviations .....	6
3.3	Interpretation .....	9
<b>4</b>	<b>Safety and Work Skills .....</b>	<b>9</b>
4.1	General .....	9
4.2	Qualifications Requirements .....	10
4.3	Compliance with Acts, Codes and Standards .....	10
<b>5</b>	<b>Process .....</b>	<b>10</b>
<b>6</b>	<b>General Requirements .....</b>	<b>11</b>
6.1	General Requirements .....	11
6.2	Recommended Pole Types .....	13
6.3	Steel Lattice Towers .....	14
6.4	Transmission Poles .....	14
6.5	Reinforced and Condemned Assets .....	14
6.6	Aerial Equipment Poles .....	14
6.7	Other Pole Types .....	15
6.8	Other Approvals .....	16
6.9	Enclosures .....	16
<b>7</b>	<b>Decorative Fixtures .....</b>	<b>16</b>
7.1	General Requirements .....	16
7.2	Modifications - Signage .....	17
7.3	Other Signs - Wooden <i>Poles</i> .....	17
7.4	Other Signs - Steel <i>Streetlight Columns</i> .....	18
7.5	<i>Pole to Pole Banners</i> .....	18
<b>8</b>	<b>Electrical Attachments .....</b>	<b>18</b>
8.1	General .....	18
8.2	Location .....	18

8.3	<i>Poles</i> .....	18
8.4	Physical Mounting .....	18
8.5	Electrical Isolation and Protection .....	18
8.6	Device Class .....	19
8.7	Wiring .....	19
8.8	Wiring Conduit .....	19
8.9	Stored Energy .....	19
<b>9</b>	<b>Risk Management, Insurance and Liability</b> .....	<b>19</b>
<b>10</b>	<b>Indemnity</b> .....	<b>20</b>
	Appendix A Horizon Power Service Areas .....	21
	Appendix B HORIZON POWER Regional Offices information .....	22
	Appendix C Application Form .....	23
	APPENDIX D Revision Information .....	28

## 1 PURPOSE

This Policy defines the technical requirements of CCTV, decorative fixtures, fittings, signs, banners and artwork on or attached to Horizon Power Assets. The Assets considered by this Policy are Poles, Ground Mounted Equipment and Power Stations. This Policy does not cover Vehicle Assets and Depots or Offices.

The Applicant of any Modification Works must accept full responsibility for ensuring that all the relevant requirements of this Policy are met.

## 2 APPLICATION

Written approval must be obtained from Horizon Power for any Modification Works, within the scope of this Policy, prior to any works commencing on a Horizon Power Asset. All applications must be made to the Retail and Community Manager for the district within which the relevant Asset is located. Horizon Power Regional offices are detailed in Appendix B.

Towns information can be found in Horizon Power Service Areas in Appendix A.

Applications can be made by completing the form at Appendix C of this Policy entitled *Application to install Modification Works on Horizon Power Assets [1]*.

This Policy addresses only the technical requirements associated with the application of any Modification Works to one or more of Horizon Power's Assets. The process for management of any other works, graffiti and non-approved artwork, including work contracts, is beyond the scope of this Policy.

Horizon Power reserves the right to modify or change this Policy without notice and cancel any approval granted for the Modification Works, to the extent limited by standing agreements. The Asset concerned will be replaced or repaired as required by Horizon Power and as a result the permanency of the Modification Works cannot be guaranteed.

It is the Applicant's responsibility to ensure that they have the latest version of this Policy.

Other factors not covered by this Policy may preclude the fixing of any unauthorised Attachment to Horizon Power Assets.

## 3 NORMATIVE REFERENCES

### 3.1 Standards

#### 3.1.1 Horizon Power Standards

- [1]. *Application to install Modification Works on Horizon Power Assets*, available at [application to install modification works on horizon power assets.pdf \(horizonpower.com.au\)](http://horizonpower.com.au/application_to_install_modification_works_on_horizon_power_assets.pdf)
- [2]. *Horizon Power's Contractors Safety and Health Guideline*, available at [Microsoft Word - OSH-3.6-1-32 Contractor Safety and Health Guidelines \(6\).docx \(horizonpower.com.au\)](http://horizonpower.com.au/Microsoft%20Word%20-%20OSH-3.6-1-32%20Contractor%20Safety%20and%20Health%20Guidelines%20(6).docx)

## PROTECTED

- [3]. *Horizon Power Field Instruction 2.15*, available on request from the local depot.
- [4]. *Vicinity Authority Permit*, available at [c953 - work\\_in\\_vicinity\\_application\\_form-230117.pdf \(horizonpower.com.au\)](http://www.horizonpower.com.au/work_in_vicinity_application_form-230117.pdf)

### 3.1.2 Other References

- [5]. *AS 1742.5, Manual of uniform traffic control devices - Part 5: Street name and community facility name signs*, Standards Australia, 2017 available at <http://www.saiglobal.com>
- [6]. *AS 2053.4, Conduits and fittings for electrical installations - Flexible plain conduits and fittings of insulating material*, Standards Australia, 1995 (R2016) available at <http://www.saiglobal.com>
- [7]. *AS/NZS 3000, Electrical Installations (known as Australian/New Zealand Wiring Rules)*, Standards Australia, 2018 (Amdt 2:2021) available at <http://www.saiglobal.com>
- [8]. *AS/NZS 3008, Electrical installations--Selection of cables, Part 1.1: Cables for alternating voltages up to and including 0.6/1 kV-Typical Australian installation conditions*, Standards Australia, 2017 available at <http://www.saiglobal.com>
- [9]. *AS/NZS 3100, Approval and test specification - General requirements for electrical equipment*, Standards Australia, 2022 available at <http://www.saiglobal.com>
- [10]. [Code of Practice for Persons working on or near energised electrical installations](#)
- [11]. [Occupational Safety and Health Act 1984 \(WA\)](#)
- [12]. [Occupational Safety and Health Regulations 1996 \(WA\)](#)
- [13]. [Road Traffic Act 1974 \(WA\)](#)
- [14]. *WA Electrical Requirements (WAER)*, WA Government-DMIRS re-issued 2019 [waer\\_2019.pdf \(commerce.wa.gov.au\)](http://www.commerce.wa.gov.au/waer_2019.pdf)
- [15]. [Workers' Compensation and Injury Management Act 1981 \(WA\)](#)
- [16]. [WA Service and Installation Requirements \(WASIR\)](#)

### 3.2 Definitions and Abbreviations

For the purposes of this policy, the following definitions shall apply.

**Applicant:** Any organisation or individual requesting permission to attach Modification Works to one or more of Horizon Power's **Assets**.

**Application:** Means a completed application form see Appendix B.

**Approvals:** Any certificates, licences, consents, permits, approvals, authority, exemption, waiver or requirements of any **Law**.

**Approved Works:** Extent of the Modification Work that is formally approved in writing by Horizon Power under this Policy.

## PROTECTED

**AS/NZS:** Australian Standards/New Zealand Standards

**Asset:** Includes **Poles, Modular Packaged Substations (MPS's), Non Modular Packaged Substations (Non-MPS's), Low Voltage Kiosks (LV Kiosks), Ring Main Units (RMU's)** and Power Stations.

**Attachment:** Is any Artwork, **Banner**, Decorative Fixture, **Electrical Attachment**, Fitting or Sign fixed or to be fixed to an Asset which is not owned by Horizon Power.

**Authorised Switching Operator:** Means a person who has been authorised by Horizon Power to perform switching on the Network.

**Banner:** A banner is a sign that identifies and or promotes a non-profit service, event or activities for community information or benefit or for licensed charities.

**Claim:** Means a demand, action or proceeding of any nature whether actual or threatened and includes any claim for payment of money (including damages):

- 1) under, arising out of, or in any way in connection with, the Approved Works or the Modification Works.
- 2) arising out of, or in any way in connection with a party's obligations under this Policy; or
- 3) arising otherwise under any Law or in equity including:
  - a) by statute.
  - b) in tort for negligence or otherwise, including negligent misrepresentations; or
  - c) for restitution.

**Contractor:** Contractor who holds a current Electrical Contractors Licence. Or a Contractor otherwise approved by Horizon Power to carry out work on or near Horizon Power Assets.

**Electrical Attachment:** Is any **Attachment** with an electrical circuit.

**Enclosure:** Any Horizon Power Asset used to house other Horizon Power equipment.

**Government Agency:** Means any government or governmental, semi-governmental, administrative, fiscal or judicial body, department, commission, authority, tribunal, government Minister, agency or entity.

**Graffiti:** Any **Attachment** NOT approved in writing by Horizon Power.

**Ground Mounted Equipment:** Means any equipment that is owned and operated by Horizon Power including and not limited to **MPS's, Non-MPS's, LV Kiosks** and **RMU's**.

**Intellectual Property Rights:** Means all intellectual and industrial property rights, including trademarks, copyright (including future copyright), inventions, patents, designs, circuits and other eligible layouts, database rights, and other intellectual property rights as defined in Article 2 of the *Convention establishing the World Intellectual Property Organization* dated 14 July 1967 (as amended from time to

## PROTECTED

time), including any application or right to apply for registration of any of these rights.

**Job Risk Assessment:** A job risk assessment is a technique that focuses on job tasks as a way to identify hazards before they occur.

**Law:** Means all laws from which legal rights and obligations arise including legislation, regulations and any other requirements of Government Agencies.

**Loss:** Means any loss, claim, action, liability, damage, cost, charge, expense, diminution in value or deficiency of any kind or character that a party pays, suffers, incurs or is liable for.

**LV ABC:** Low Voltage Aerial Bundled Conductor

**LV Kiosks:** A ground base low voltage switchgear is housed in a single package.

**Modification Works:** Is any **Attachment** fixed to or to be fixed to an **Asset** which is owned by Horizon Power.

**Moral Rights:** Means the rights conferred on authors of works by Part IX of the *Copyright Act 1968* (C<sup>th</sup>).

**Modular Packaged Substations (MPS's):** A ground base transformer complete with the low voltage and/or high voltage switchgear is housed in a single package.

**Non Modular Packaged Substations (Non-MPS's):** A combination of one or more transformers, low voltage and/or high voltage switchgear as required each item housed in a separate self-contained metal enclosure.

**Personnel:** Means a party's officers, employees, directors, delegates, subcontractors, partners, agents and service providers of any nature.

**Point of Supply:** As defined in the *WA Electrical Requirements [13]*, the junction of the consumer mains with the network operator's distribution network.

**Pole:** A Horizon Power Asset used for the support of aerial network equipment.

**Policy:** Means this Policy entitled 'Third Party Attachments to Horizon Power Assets' as updated or amended from time to time.

**RMU:** Ring Main Unit is a ground mounted switching system and fusing system used in a distribution system.

**Service Protection Device (SPD):** As defined in the *WA Electrical Requirements [13]*, the junction of the consumer mains with the network operator's distribution network.

**Streetlight Column:** A Horizon Power Asset used for the support of streetlights only.

**Transmission Poles:** Assets used for the support of the transmission aerial network ( $\geq 66$  kV). Transmission Assets may be co-located with transmission and distribution Assets.



## PROTECTED

**Third Party:** Means a person not being Horizon Power or the Applicant or a director, officer or employee of either Horizon Power or the Applicant.

**Vehicle Asset:** Means a vehicle Owned or Hired by Horizon Power.

**Vicinity Authority Permit:** A written authority from Horizon Power giving the Applicant's Personnel access to work in the vicinity of a Horizon Power Asset.

### 3.3 Interpretation

In this Policy:

- a) headings and bold type are for convenience only and do not affect the interpretation of this Policy
- b) unless the context otherwise requires, words importing the singular include the plural and vice versa
- c) an expression importing a natural person includes any company, partnership, joint venture, association, corporation or other body corporate and any Government Agency
- d) a reference to a statute includes all statutes amending, consolidating or replacing it, and a reference to a statute includes all regulations, proclamations, ordinances and by-laws issued under that statute
- e) a reference to a body (including, without limitation, an institute, association or authority), whether statutory or not:
  - i) which ceases to exist
  - ii) whose powers or functions are transferred to another body, or
  - iii) is a reference to the body which replaces it or which substantially succeeds to its powers or functions; and
- f) specifying anything after the words 'include' or 'for example' or similar expressions does not limit what else is included.

## 4 SAFETY AND WORK SKILLS

### 4.1 General

Horizon Power is committed to the philosophy that all accidents are preventable. All work is to be conducted in a safe manner. A task must cease if the safety of the people performing the work, Horizon Power **personnel** or the public cannot be assured.

In the execution of the **Approved Works** the **Applicant** must ensure the following:

- a) personnel wear protective equipment (e.g. gloves, clothing (high visibility vests), footwear, safety glasses and helmets) as detailed in Horizon Power's standard for Personnel Protective Clothing (available on request through the relevant regional depot); and
- b) have a documented **Job Risk Assessment** for the **Approved Works**.

Further to the requirement detailed above, Horizon Power may require the **Applicant** to:

## PROTECTED

- c) apply for the **Vicinity Authority Permit** prior to commencement of **Approved Work**
- d) have a Horizon Power observer at the **Asset** during any **Approved Work**
- e) conduct a polarity test on the **Asset**; and
- f) perform all work off-site and have the equipment installed by Horizon Power or a Horizon Power approved **Contractor**.

Only Authorised Contractors may undertake work in accordance with this Policy. A list of Authorised Contractors is available on request through the relevant regional depot.

### 4.2 Qualifications Requirements

All personnel that are engaged for the **Modification Works** other than those identified in Section 7 are required to:

- a) hold a current Western Australian 'A' grade Electrical Workers License and work under the supervision of an approved **Contractor** or Horizon Power
- b) be an approved Horizon Power **Contractor** with the necessary skills and competency to carry out the **Approved Works**; and
- c) be licensed to operate an Elevated Work Platform to WorkSafe Western Australia requirements if the **Modification Work** is to be fixed 1.8 metres above ground level.

### 4.3 Compliance with Acts, Codes and Standards

All **contractors** that are engaged to perform any work installing or removing **Modification Works** are required to comply with all applicable **Laws** including, without limitation, the following:

- a) The *Occupational Safety and Health Act 1984 (WA)* [11] and *Occupational Safety and Health Regulations 1996 (WA)* [12].
- b) *Road Traffic Act 1974 (WA)* [13] and Police Department requirements for traffic control, in conjunction with the Horizon Power Field Instruction 2.15 [3] *Temporary Safety Barriers and/or Warning Signs* (available on request through the relevant regional depot).
- c) EnergySafety – *Code of Practice for Personnel Electrical Safety for Vegetation Control Work Near Live Power Lines* [10]. All aerial work must be carried out from an Elevated Work Platform. Ladders or anything that will add load to a **Pole** or **Streetlight Column** must not be placed against any **Poles** or **Streetlight Column**.
- d) Horizon Power's *Contractor Safety and Health Guidelines OSH-3.6-1-32* [2] which is available on request through the relevant regional depot.

## 5 PROCESS

- a) The **Applicant** must forward the following documentation to Horizon Power:
  - A suitable representation of the intended **Modification Work** to allow Horizon Power to assess the **Application**. This may be in the form of a

## PROTECTED

sketch, worded description or photograph(s) of similar modifications, see Appendix B.

- A letter endorsing the **Modification Work** by the Local Government Authority and/or other appropriate governing bodies e.g. School or community facility, etc.
  - A suitable detailed description of the **Asset** to which the **Attachment** will be fixed e.g. exact location, type etc. to allow Horizon Power to precisely identify the **Asset** and confirm Horizon Power's ownership of the **Asset**.
  - Written acknowledgment that the requirements of this Policy have been understood and have been / will be complied with.
- b) The **Applicant** is responsible for maintaining a record of correspondence relating to the approval of the **Application**.
- c) Written approval must be obtained from Horizon Power for each and every proposed **Modification Work** within the scope of this Policy.
- d) The **Modification Work** may not deviate from the design in the **Application** approved by Horizon Power without the prior written approval of Horizon Power. Any proposed changes to the **Modification Work** must be forwarded in writing to Horizon Power for approval at least ten days prior to the proposed works commencing.
- e) Horizon Power reserves the right to approve, approve with conditions or reject any **Application**.
- f) The **Applicant** may be responsible for costs incurred by Horizon Power in the assessment of the **Attachment** the subject of the **Application** where special investigation for suitability is required e.g. multiple **Attachments**. Horizon Power must advise the **Applicant** of these costs prior to any works being undertaken.

## 6 GENERAL REQUIREMENTS

### 6.1 General Requirements

All **Modification Works** on Horizon Power **Assets** must comply with the following conditions:

- a) Where the **Modification Work** is fixed to an **Asset** from the ground, the **Modification Work** must not extend more than 1.8 metres above ground level.
- b) Where the **Modification Work** is to be applied to an **Enclosure**, it must not obstruct ventilation or doors from opening.
- c) The **Modification Work** must not obscure any other signage (such as **Pole** detail disks, **Pole** danger plates or fire hydrant location signs), identification labels or any other authorised markings on the **Pole** or **Enclosure**. Any **Modification Works** must be attached at least 20 mm from any markings to aid visibility of the markings.
- d) **Modification Works** must not be attached to **Poles** identified by Horizon Power as being unsuitable for use or due for replacement. It is the **Applicant's** responsibility to confirm the suitability of the **Asset** with Horizon Power.

PROTECTED

- e) In the event that the **Modification Work** is found to contravene road safety, the **Applicant** is responsible for removing the **Modification Work** and restoring the **Asset** to Horizon Power's satisfaction.
- f) Any damage to a Horizon Power **Asset** caused by the **Modification Works** must be immediately reported to Horizon Power. Failure to report the damage will result in the approval in relation to the **Approved Works** being withdrawn. Any repairs carried out by Horizon Power will be at the **Applicants'** expense.
- g) Where it can be proven beyond reasonable doubt that the presence of the **Modification Work** has caused vandalism to Horizon Power's **Assets**, the **Applicant** is liable for costs associated with the replacement or repair of Horizon Power's **Assets**. An example of this would be the case where wilful damage is visible both on the **Modification Work** and on Horizon Power **Assets** on the same structure, inflicted at the same time.
- h) Horizon Power reserves the absolute discretion to refuse any **Modification Work** that may be perceived by any community group as offensive or increases the probability of damage to Horizon Power **Assets** from vandalism.
- i) Fixing any **Modification Work** to Horizon Power **Assets** is to be done in a manner that does not damage the **Asset** in any way. **Modification Work** must not be fixed to **Asset** by welding.
- j) **Modification Works** that protrude from an **Asset** must not:
  - i) be fitted less than three metres from ground level and below any existing street name signs
  - ii) interfere with or obstruct any of Horizon Power's existing equipment and/or signage
  - iii) have modifications that protrude less than three meters from ground level; and
  - iv) restrict operation of any switching devices or general access to **Assets**.
- k) Where **Modification Works** are to be located on **Streetlight Columns**, all corners must be rounded and there must be no sharp edges exposed.
- l) **Modification Works** must be securely fixed so as to not constitute any hazard to the public or Horizon Power employees. Horizon Power may require the **Applicant** to refix or remove any or all **Modification Works** that in Horizon Power's view restricts access or poses a hazard
- m) **Modification Works** are not permitted on **Poles** that support transformers, switchgear, cables or similar operational equipment as determined by Horizon Power.
- n) Horizon Power offers no guarantee that **Assets** to which **Modification Works** are fixed will remain in their existing locations or configurations. When in Horizon Power's view removal or relocation of an **Asset** renders the **Modification Works** unsuitable, the **Applicant** is responsible for identifying suitable alternatives and for any associated costs.
- o) Good quality material must be used in any **Modification Works**. All material must be:

## PROTECTED

- Stable and non-reactive up to a temperature of 85°C
  - Non-toxic
  - Rust proofed
  - Non-hazardous and
  - Non-detrimental to Horizon Power's **Asset**.
- p) If a **Pole** with **Modification Works** is moved, removed or modified to support equipment as per above, Horizon Power reserves the right to instruct the **Applicant** to remove the **Modification Work** at the **Applicant's** cost or remove the **Modification Work** and return it to the **Applicant's** last known address. Horizon Power will endeavour to contact the **Applicant**, where a contact number is given on the **Modification Work**, but does not guarantee that it will contact the **Applicant** when the **Modification Work** is removed.
- q) A contact phone number for the **Applicant** of the **Modification Works** is to be provided indelibly on the **Modification Work**.
- r) A **Vicinity Authority Permit** must be obtained from Horizon Power if a **Modification Work** is to be fixed to an **Asset** enclosing or supporting energised **Assets**. Supervision by Horizon Power may be required at Horizon Power's absolute discretion. The **Applicant** is responsible for the cost of any supervision by Horizon Power.
- s) The **Applicant** is to maintain the **Modification Work** in good order by way of regular inspection and repair.
- t) The size, location and type of **Modification Work** must not be distracting to vehicle drivers and must not be obstructive or disturb the general ambience of the local community.
- u) Nothing (including ladders or other equipment) may be placed or leaned against any Horizon Power **Assets**.
- v) Where a **Modification Work** requires an **Asset** to be modified, a structural analysis is required (at the **Applicant's** cost) to ascertain that the **Asset** is capable of supporting the **Modification Work**. Design calculations and all records of the **Modification Work** must be supplied to Horizon Power.
- w) Where an **Attachment** is to be installed on an **Asset** then an engineer's report is required detailing the size of the **Attachment** and the wind loading of the design.

### 6.2 Recommended Pole Types

It is recommended that **Modification Works** are attached to intermediate or termination distribution **Poles**. **Streetlight Columns** with nominal luminaire mounting heights of 10.5 and 12.5 m, and have a single outreach, are also recommended.

For Decorative Fixtures, the distribution **Pole** may carry LV only, or both LV and HV, or HV only.

For **Electrical Attachments**, the distribution **Pole** may carry LV only, or both LV and HV, but **Poles** that carry HV only are not suitable.

PROTECTED

The LV may be either open-wire (identifiable as four spaced uncovered conductors) or **LVABC** (identifiable as a single insulated cable). HV is identifiable as three spaced uncovered conductors.

**6.3 Steel Lattice Towers**

**Modification Works** are **NOT** permitted on steel lattice towers. Examples of transmission lattice towers and structures are provided in Figure 1.

**6.4 Transmission Poles**

**Modification Works** are **NOT** permitted on transmission **Poles**. Examples of transmission **Poles** and structures are provided in Figure 1.

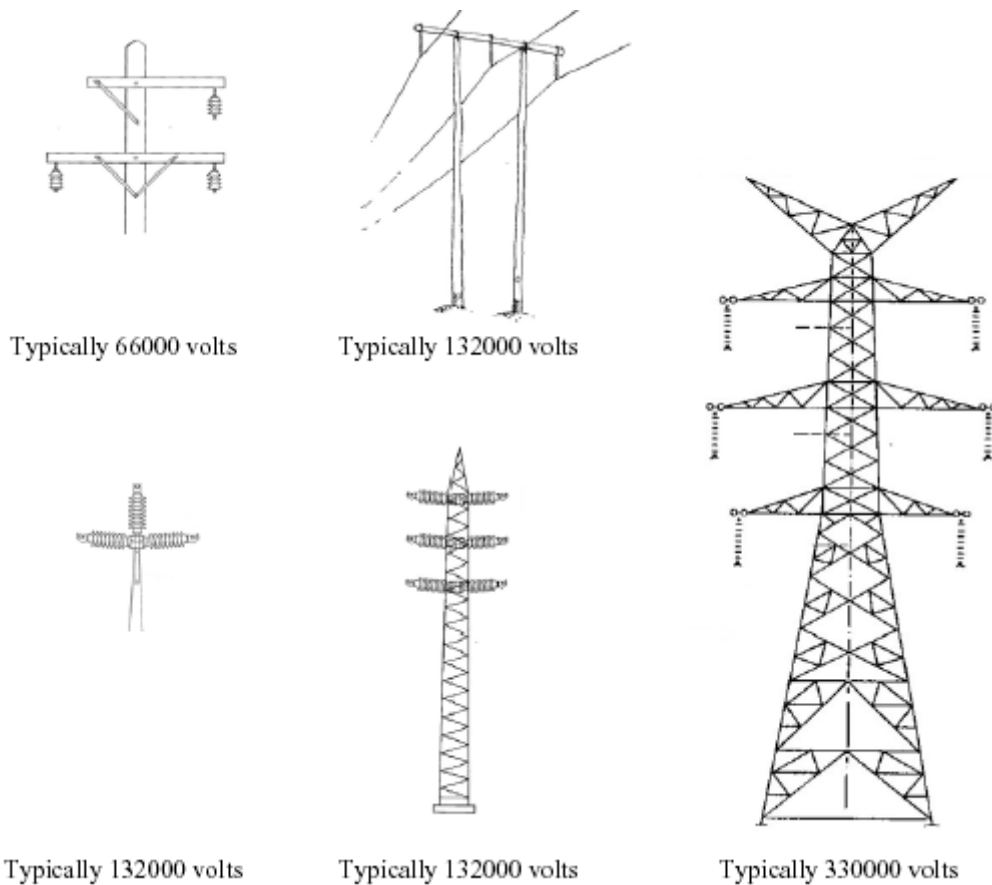


Figure 1 Examples of transmission poles and structures

**6.5 Reinforced and Condemned Assets**

**Modification Works** are **NOT** permitted on **Assets** that have been reinforced, or assessed as condemned.

**6.6 Aerial Equipment Poles**

**Modification Works** are **NOT** permitted on **Poles** that have equipment such as transformers, pole-top switches, power correction devices, and cable termination poles.

Examples of **Poles** with mounted equipment are provided in Figure 2.

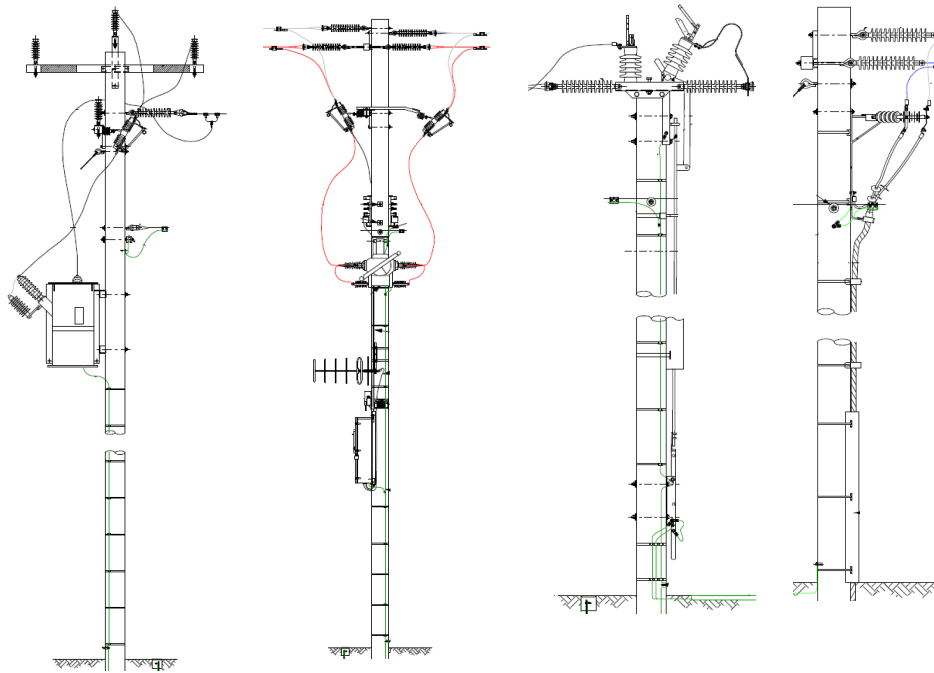


Figure 2 Examples of poles with equipment

### 6.7 Other Pole Types

**Modification Works** are **NOT** permitted on **Poles** where conductors terminate from two directions (see Figure 3), or running disc angle (see Figure 4).

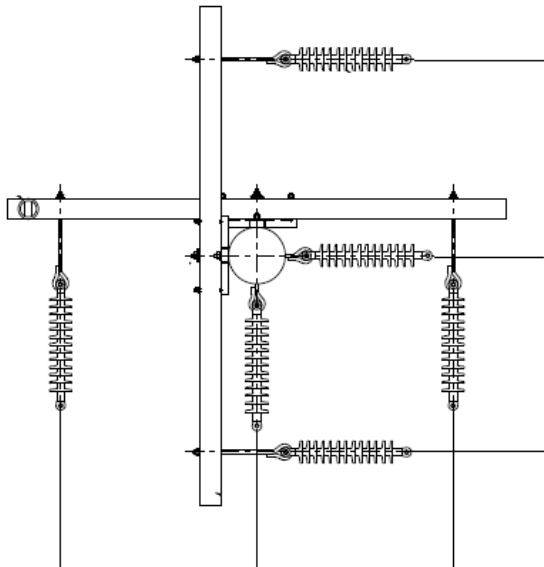


Figure 3 Examples of poles with conductor terminations (view shown from above)

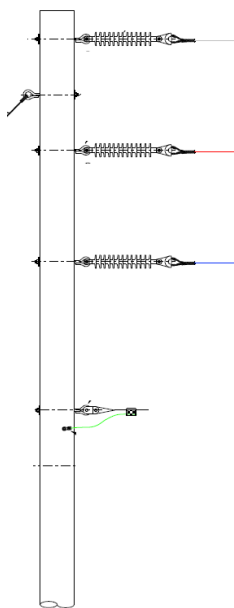


Figure 4 Example of 'running disc angle' pole

## 6.8 Other Approvals

**Applicants** are responsible for obtaining any **Approvals** required by **Law** for any **Modification Work**.

## 6.9 Enclosures

Horizon Power may approve **Enclosures** which may be prepared and have approved **Modifications Works** applied off-site prior to installation. All costs incurred under these arrangements are the responsibility of the **Applicant**.

# 7 DECORATIVE FIXTURES

## 7.1 General Requirements

All Decorative Fixtures on Horizon Power **Assets** must comply with the following conditions:

- a) Decorative Fixtures containing political statements, offensive material, religious content, commercial artwork or any statement which may advantage or disadvantage one business or group over another must **NOT** be located on Horizon Power **Assets**.
- b) Preference may be given to Decorative Fixtures following a nature, environmental or community theme, such as landscapes, animals etc.
- c) Decorative Fixture must not contain hidden messages.
- d) All Decorative Fixture must have the words "**APPROVED BY LOCAL COUNCIL**", in approximately 20 mm high lettering in a visible colour, applied at the bottom right-hand corner of the **Attachment** (or 100 mm from base of **Pole**).



## PROTECTED

- e) Horizon Power will not be liable for any cost associated with the Decorative Fixture, or for any **Loss** or damage to the Decorative Fixture, which may occur during maintenance, repairs or replacement of Horizon Power's **Asset**.
- f) If the Decorative Fixture deteriorates to the extent that Horizon Power decides (in its absolute discretion) that it is no longer in the community interest or detrimental to the condition of the **Asset**, Horizon Power may cover or remove the Decorative Fixture at the **Applicant's** expense. Horizon Power will notify the **Applicant** in writing of any action it takes under this clause.
- g) Signs indicating direction such as street names and community facility name signs may extend from the **Pole** or **Streetlight Column** to achieve that purpose. The shape, size and mounting height of such signs must comply with AS 1742.5 [5].
- h) Where Decorative Fixtures that do not indicate directions (such as fire hydrant, Safety House and Neighbourhood Watch signs) are located on **Poles**, they are to be wrapped around the **Pole** and fixed to prevent protrusion of sharp corners. These must not cover up or obscure any Horizon Power identification numbering or associated signage. Wrapped signage must not be placed around the immediate base of the **Pole** as Horizon Power requires access to the **Pole** base in order to carry out **Pole** inspections.
- i) If a **Pole** with Decorative Fixtures is moved, removed or modified to support equipment as per above, Horizon Power reserves the right to instruct the **Applicant** to remove the Decorative Fixture at the **Applicant's** cost or remove the Decorative Fixture and return it to the **Applicant's** last known address. Horizon Power will endeavour to contact the **Applicant**, where a contact number is given on the Decorative Fixture, but does not guarantee that it will contact the **Applicant** when the Decorative Fixture is removed.
- j) The **Modification Work** must not be deemed to create cultural significance and can be removed at Horizon Power's absolute discretion at any time.

### 7.2 Modifications - Signage

The following signs are approved for use on Horizon Power's steel, wooden and concrete **Poles** and steel **Streetlight Columns**.

- Safety house signs
- School signs
- Neighbourhood watch signs
- Street Name signs
- Bus routes signs; and
- Fire hydrants signs.

### 7.3 Other Signs - Wooden Poles

Horizon Power may consider other signs for placement on wooden poles however they must comply with the requirements of Sections 6.1 and 7.1.

#### 7.4 **Other Signs - Steel Streetlight Columns**

No signage is permitted on Horizon Power's steel street light columns, other than those indicated in Section 7.2.

#### 7.5 **Pole to Pole Banners**

**Pole to Pole** Banners are **NOT** permitted on Horizon Power **Assets**.

**Banners** must **NOT** be attached on or between **Assets** or make use of a Horizon Power **Poles** or **Streetlight Columns** to support one end of a **Banner**.

### 8 **ELECTRICAL ATTACHMENTS**

#### 8.1 **General**

Only CCTV cameras, Communication devices i.e. comms relays for water and electricity meter reading and their associated communications infrastructure are currently allowed under this policy.

#### 8.2 **Location**

The lowest point of the **Electrical Attachment** must be at least 4 m above finished ground level.

The highest point of the **Electrical Attachment** must be at least 1.2 m away from LV conductors, and at least 2.2 m away from HV conductors. These minimum distances are measured vertically.

#### 8.3 **Poles**

**Electrical Attachments** may be installed only on **Poles**:

- Distribution **Poles** carrying intermediate HV and LV
- Distribution **Poles** where HV and LV terminate
- Distribution **Poles** carrying intermediate LV
- Distribution **Poles** where LV terminates
- **Streetlight Columns** with a single outreach, of nominal luminaire mounting height 10.5 m and 12.5 m

In addition, **Electrical Attachments** may not be installed on **Poles** to which Decorative Fixtures are already attached.

#### 8.4 **Physical Mounting**

The **Electrical Attachment** must only be attached by the following means:

- a) For concrete and steel **Poles**, by stainless steel band-it straps,
- b) For wooden **Poles**, by band-it straps or coach screws.

#### 8.5 **Electrical Isolation and Protection**

Horizon Power will provide a drawing indicating the **Point of Supply** and network-owned **Service Protection Device (SPD)**, housed within a connection box.

## PROTECTED

Installed equipment must be isolated and earthed for people to work on. Isolation and earthing must be carried out by **Authorised Switching Operators** only.

### 8.6 Device Class

Devices may be either Class I or Class II as defined by AS/NZS 3000 [7].

### 8.7 Wiring

Wiring between the connection box is considered as Consumer Mains and must be compliance in accordance with AS/NZS 3000 [7], AS/NZS 3008 [8], the WAER [14] and the WASIR [16].

### 8.8 Wiring Conduit

The wiring between connection box and **Electrical Attachment** must be enclosed in flexible conduit that complies with AS 2053.4 [6].

### 8.9 Stored Energy

Where **Electrical Attachments** create or store energy (e.g. photovoltaic panel or backup battery), the design of the device must prevent this energy from energising the mains electricity supply.

## 9 RISK MANAGEMENT, INSURANCE AND LIABILITY

Horizon Power requires the **Applicant** to have the following insurances and provide satisfactory evidence of the currency of the policies before commencing any work for an **Attachment** on an **Asset**.

Insurance Policies for:

- a) Public Liability which:
  - i) covers all liability to any Third Party for death, injury and **Loss** or damage to people or property caused by or attributable to the **Approved Works** for a limit of not less than \$20 million.
  - ii) notes Horizon Power's interest.
  - iii) includes cross liability and waiver of subrogation endorsements; and
  - iv) has an advertising liability extension.
- b) Workers Compensation insurance against any **Claim** in respect of any personal injury to or death of any person employed or engaged by the **Applicant** which arises out of, or is caused or contributed to by, the performance or non-performance of the **Applicant** or an agent or employee of the **Applicant**:
  - i) at common **Law** and for breach of any **Law**; and
  - ii) for any compulsory statutory workers' compensation benefits or other liability under the Workers' Compensation and Injury Management Act 1981 (WA) [15] or other applicable **Laws**.
- c) Voluntary Workers Personal Accident Insurance - Covering all non-paid persons who will be engaged in the **Approved Works**.

## PROTECTED

- d) Motor Vehicle Third Party property insurance - covering all **Loss** or damage to property of any Third Party caused by or attributable to the use of a motor vehicle in the **Approved Works** for a limit of not less than \$20 million.

The **Applicant** must consider road safety and protection of the work site while undertaking the **Approved Works** – particularly when undertaking the **Approved Works** on or near roadways. **Applicants** are referred to WorkSafe’s website for further information – [www.commerce.wa.gov.au/worksafe/](http://www.commerce.wa.gov.au/worksafe/)

**All of the above insurance information must be included in the written application.**

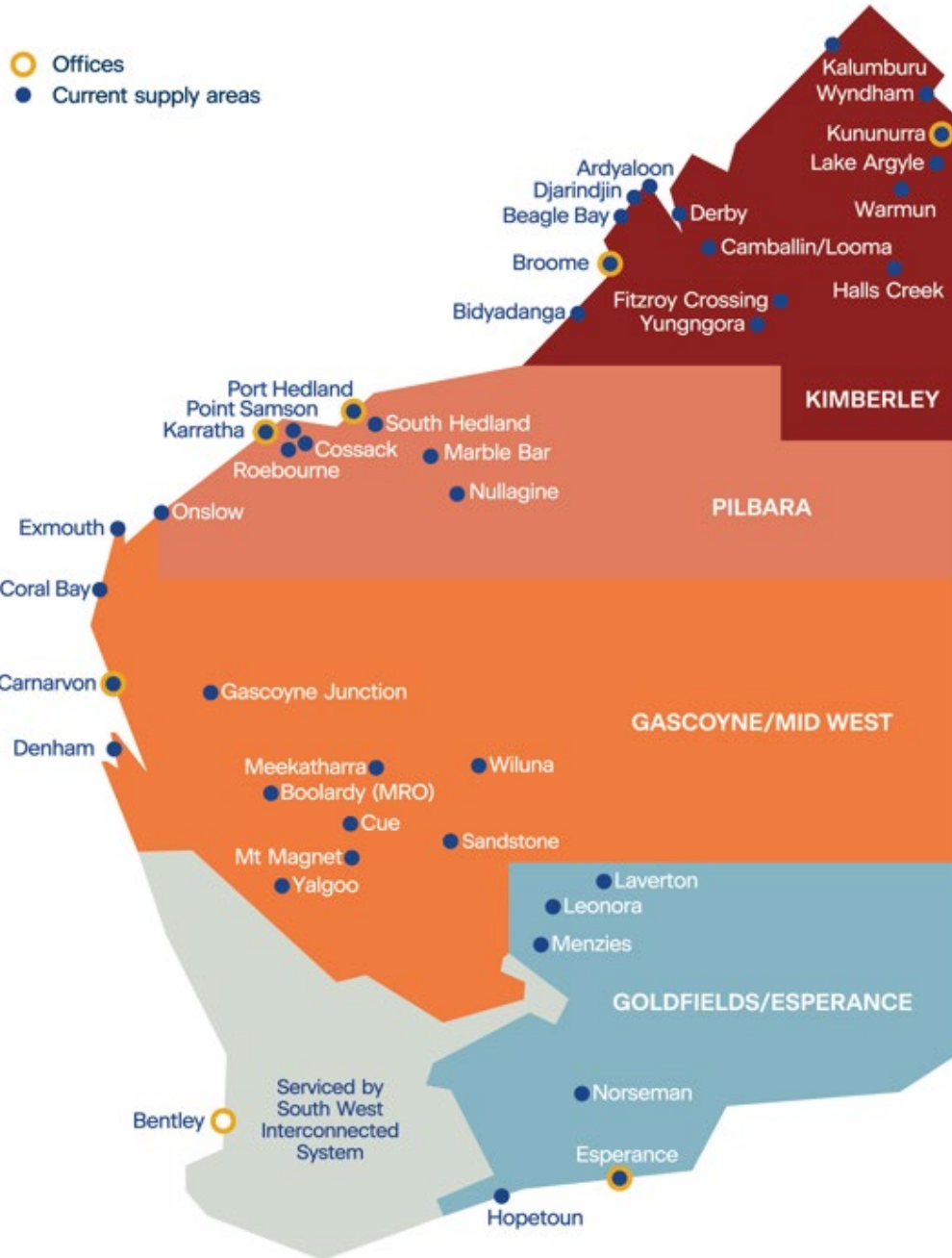
If the **Applicant** subcontracts the whole or any part of the **Approved Works**, then the **Applicant** must cause the subcontractor to be insured as specified above in Section 9.

## 10 INDEMNITY

- a) The **Applicant** indemnifies Horizon Power and Horizon Power’s **Personnel** against any **Loss** and **Claims** suffered or incurred by Horizon Power or Horizon Power’s **Personnel** in connection with any act or omission by the **Applicant** or the **Applicant’s Personnel** arising from, or in connection with, the **Approved Works**, the **Modification Works** and the performance or non-performance of the **Applicant’s** obligations under this Policy, including any:
- i) breach of the **Applicant’s** obligations under this Policy.
  - ii) tort, including negligence or breach of an Act or Authorisation; and
  - iii) breach of equitable duty, including breach of confidentiality or breach of fiduciary duty.
- b) The **Applicant** further indemnifies Horizon Power and Horizon Power’s **Personnel** against any **Loss** and **Claims** suffered or incurred in connection with any **Claim** by a Third Party against Horizon Power or Horizon Power’s **Personnel** arising from or in connection with the performance or non-performance of the **Applicant’s** obligations under this Policy including any:
- i) breach of **Law**
  - ii) tort, including negligence or breach of a **Law**
  - iii) breach of equitable duty; or
  - iv) **Claim** by a Third Party that its **Intellectual Property Rights** or **Moral Rights** have been infringed.
- c) The **Applicant** performs its obligations under this Policy at the **Applicant’s** sole risk, and to the extent permitted at **Law**, Horizon Power will not be liable to the **Applicant**, the **Applicant’s Personnel**, or any Third Party for any **Loss** sustained by any person or to any property, howsoever caused, arising out of or in connection with the **Approved Works**, the **Modification Works** or this Policy, except as arising out of or as a result of negligence or a breach of contract by Horizon Power or Horizon Power’s **Personnel**.

APPENDIX A HORIZON POWER SERVICE AREAS

# Service area



## APPENDIX B HORIZON POWER REGIONAL OFFICES INFORMATION

### **East Kimberley**

Lot 228 Messmate Way, Kununurra WA 6743  
PO Box 916 Kununurra WA 6743  
Ph: (08) 9166 4700  
Fax: (08) 9166 4720

### **West Kimberley**

2-4 McDaniel Road, Broome WA 6725  
PO Box 345 Broome WA 6725  
Ph: (08) 9192 9900  
Fax: (08) 9192 9901

### **East Pilbara - Port Hedland**

18 Anderson Street, Port Hedland WA 6721  
PO Box 314 Port Hedland WA 6721  
Ph: (08) 9173 8281  
Fax: (08) 9173 8222

### **West Pilbara – Karratha**

Stovehill Road, Karratha WA 6714  
PO Box 817 Karratha WA 6714  
Ph: (08) 9159 7250  
Fax: (08) 9159 7288

### **Esperance and Southern Goldfields**

143 Simms Street, Esperance WA 6450  
PO Box 148 Esperance WA 6450  
Ph: (08) 9072 3400  
Fax: (08) 9072 3401

APPENDIX C APPLICATION FORM



*Application to install modification works on Horizon Power assets*

Modification details Type

of modification Artwork

Attachment type:  Sign label  Camera  Other

Asset ID number and location

Asset ID number      Asset location (Street, Suburb, House number)


Note: Technical details for the proposed works is to be provided as an attachment to this form.

Applicant details

Surname:       Given name:

Business name:       ABN:

Address:

Daytime phone number:       Email:

Works period:       Start date:

Signature:       Application date:

By signing this Application I acknowledge that I have read and understood the Standard entitled 'Third Party Attachments to Horizon Power Assets' and agree to be bound by its terms including the indemnity and insurance provisions \*\*\* which the Applicant and Horizon Power have agreed to amend to reflect the terms set out in the attachment to this Application at Annexure A.

Horizon Power office use

Attachment approves: Yes/No      Applicant notifies: Yes/No copy scanned into DM: Yes/No

CCRM signature:       Date

PROTECTED

Technical Information Artwork

Details

Length (cm):  Width (cm):  Materials to be used:

Description:

Sign/Label Detail

Length (cm):  Width (cm):  Weight (kg):

Materials to be used:

Camera

Type:  Manufacturer:

Model:  Number of units:

Length (cm):  Width (cm):  Depth (cm):  Weight (kg):

Power Supply Make:  Model:

Length (cm):  Width (cm):  Depth (cm):  Weight (kg):

Wireless Interface Make:  Model:

Length (cm):  Width (cm):  Depth (cm):  Weight (kg):

Attachment total power (Watts):

Other

Description:

Purpose:

List of items

Items:  Manufacturer:  Model:

Length (cm):  Width (cm):  Depth (cm):  Weight (kg):



PROTECTED

*Sketch and /or engineering report to be attached.*

## PROTECTED

**\*\*\* Annexure A – Special Conditions to amend the insurance and indemnity provisions stated in Horizon Power’s Standard entitled ‘Third Party Attachments to Horizon Power Assets’.**

Regional Power Corporation and the Applicant have agreed to amend clauses 9 and 10 as follows:

*For so long as the Applicant is Telstra Corporation Limited (or its corporate successor), the following clauses apply in place of clause 9 of the Application:*

### **9. INSURANCE AND INDEMNITY**

#### **9.1 Property Insurance - Applicant to self-insure**

For so long as Telstra Corporation Limited (or its corporate successor) is the Applicant, Horizon Power acknowledges that the Applicant will self-insure the respective rights and interests of Horizon Power and the Applicant for damage which must be repaired by the Applicant under this Policy.

#### **9.2 Applicant to insure if self- insurance ceases**

If the Applicant:

- (a) elects to discontinue; or
- (b) is unable to continue,

the self- insurance referred to in clause [9.1](#), the Applicant must effect such insurance with an insurer reasonably approved by Horizon Power against the insurable risks required under this Policy.

#### **9.3 Workers' Compensation Insurance**

For so long as Telstra Corporation Limited (or its corporate successor) is the Applicant, Horizon Power acknowledges that the Applicant holds a licence pursuant to the *Safety, Rehabilitation and Compensation Act 1988* (Cth).

#### **9.4 Public Liability Insurance**

- (a) For so long as Telstra Corporation Limited (or its corporate successor) is the Applicant, Horizon Power acknowledges that the Applicant has a global insurance policy which includes public liability insurance in excess of \$20 million and which includes Horizon Power as an additional insured and includes cross liability and waiver of subrogation endorsements and has an advertising liability extension.
- (b) If requested in writing by Horizon Power, the Applicant will provide Horizon Power with a letter confirming the Applicant’s insurance as specified under this clause, such request not to be made more than once a year during the Term.

### **10. INDEMNITY**

- (a) The Applicant indemnifies Horizon Power and Horizon Power’s Personnel against any Loss and Claims suffered or incurred by Horizon Power or Horizon Power’s Personnel caused or contributed to by (to the extent of the contribution) any act or omission by the Applicant or the Applicant’s Personnel arising from, or in connection with, the Approved Works, the Modification Works and the performance or non- performance of the Applicant’s obligations under this Policy, including any:
  - i) breach of the Applicant’s obligations under this Policy.
  - ii) tort, including negligence or breach of an Act or Authorisation; and
  - iii) breach of equitable duty, including breach of confidentiality or breach of fiduciary duty.

## PROTECTED

- (b) The Applicant further indemnifies Horizon Power and Horizon Power's Personnel against any Loss and Claims suffered or incurred by Horizon Power or Horizon Power's Personnel as a result of any Claim by a Third Party against Horizon Power or Horizon Power's Personnel arising from or in connection with the performance or non-performance of the Applicant's obligations under this Policy including any:
  - i) breach of Law;
  - ii) tort, including negligence or breach of a Law;
  - iii) breach of equitable duty; or
  - iv) Claim by a Third Party that its Intellectual Property Rights or Moral Rights have been infringed.
- (c) The Applicant performs its obligations under this Policy at the Applicant's sole risk, and to the extent permitted at Law, Horizon Power will not be liable to the Applicant, the Applicant's Personnel, or any Third Party for any Loss sustained by any person or to any property, howsoever caused, arising out of or in connection with the Approved Works, the Modification Works or this Policy, except as arising out of or as a result of negligence or a breach of contract by Horizon Power or Horizon Power's Personnel.
- (d) The indemnity provided by the Applicant under this clause 10 will not exceed \$30 million per event and in the aggregate.
- (e) The liability of the Applicant to indemnify Horizon Power under this clause 10 must be reduced proportionately to the extent that any wrongful act or omission of Horizon Power contributed to the Loss or Claim.
- (f) In defending or settling any claim, action or demand the subject of an indemnity under this clause 10, Horizon Power must consult with the Applicant in good faith.

PROTECTED

**APPENDIX D REVISION INFORMATION**

(Informative) Horizon Power has endeavoured to provide standards of the highest quality and would appreciate notification of errors or queries.

Each Standard makes use of its own comment sheet which is maintained throughout the life of the standard, which lists all comments made by stakeholders regarding the standard.

A comment sheet found in **DM# 4179103**, can be used to record any errors or queries found in or pertaining to this standard. This comment sheet will be used when the standard is periodically reviewed and updated.

Date	Rev No.	Notes
09/03/2011	1	Approved for use in Horizon Power
22/06/2016	2	Reformatted, updated referenced documents, changed standard number from A02-00-PG-0145-2011 to HPC-11NH-18-0001-2011
30/03/2017	3	Amended to allow Electrical Attachments
15/01/2023	4	Update the Application form includes Annexure A in Appendix B